

Aquadrain Perimeter Drainage Channel

Product Description

Aquadrain Perimeter Drainage Channel is designed to provide additional protection in basement waterproofing applications. **Aquadrain Perimeter Drainage Channel** is usually used in conjunction with cavity drainage membrane systems and is installed at the wall-floor junction.

Benefits

- Manages water ingress
- Links easily with Safeguard Sentry pump systems
- Tough durable design
- Quick & easy installation
- Removable lids for access and joining long runs

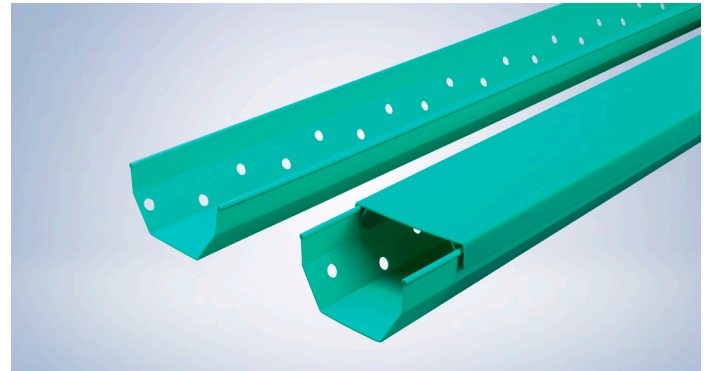
Properties

Dimensions	2 m x 50 mm x 80 mm (L x D x W)
Variants	<ul style="list-style-type: none"> • With upstand • Flat top
Appearance	Aqua Green

Application Information

Preparation

In new build constructions it will usually be possible to cast a 150 mm wide x 150 mm deep channel in the slab around the perimeter of the basement. On projects where the slab has already been cast, it is sometimes possible to chase a channel into the slab, although a structural engineer should be consulted first. In Victorian basements where the floor is constructed of loose-laid bricks, these can be removed around the perimeter of the basement to form a channel. Where it is not possible to form a channel of any kind, **Aquadrain Perimeter Drainage Channel** can be laid on top of the slab. For further advice on correct detailing, please contact our technical department.



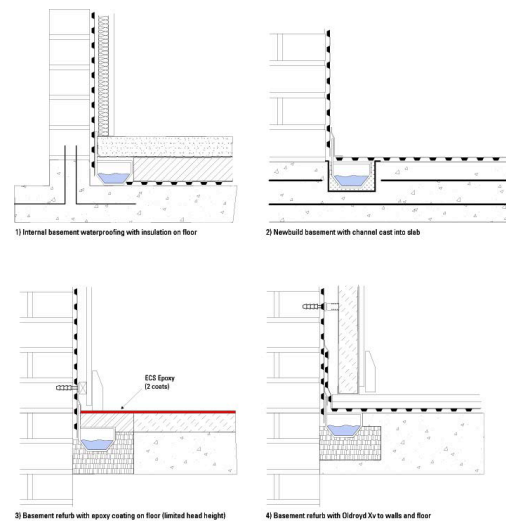
Application

Where a cavity drainage membrane is to be used on the floor, the top, flat surface of the **Aquadrain Perimeter Drainage Channel** should be flush with the top of the floor slab. Where the floor is to be waterproofed using a cementitious or epoxy system, the top of the **Aquadrain Perimeter Drainage Channel** should be 50 - 75 mm below the top of the slab. The remaining gap is filled with **Vandex Unimortar 1** and made good.

Corners and junctions are cut and mitred to suit. **Oldroyd Overseal Tape** (75 mm or 200 mm) can be used to form a permanent joint, if required. Standard (right-angled) corner pieces are available

As with all drainage systems, jetting points should be incorporated at each change of direction or every 10 - 15 metres (min) on straight runs.

The **Aquadrain Perimeter Drainage Channel** should lead to a suitable sump and pump from the Safeguard Sentry sump pump range. More than one sump and pump may be required on larger projects (call our technical department for details).



Information given is in good faith based on experience and usage, however all recommendations are made without warranty or guarantee, since the conditions of use are beyond our control. All goods are sold in accordance with our Conditions of Sale, copies of which are available on request. Customers are advised that products, techniques and codes of practice are under constant review and changes occur without notice; please ensure you have the latest updated information.